

PAS3 Pilot LED

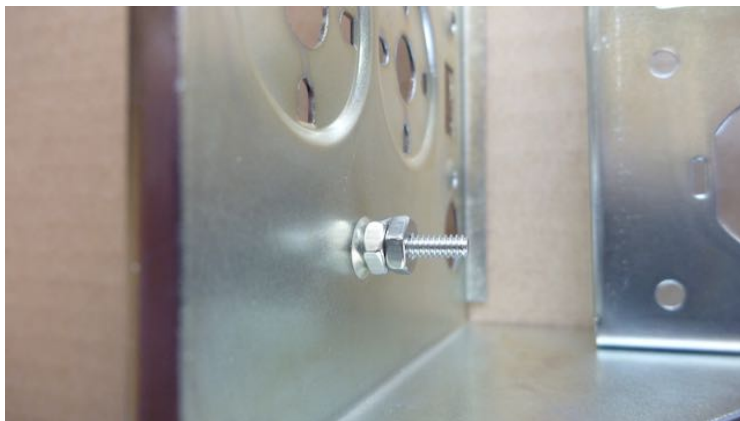
assembly and installation instructions, v1, 11-2017

PCB Assembly

Install the diode and resistor first, followed by the LED.
The **long** lead of the LED goes through the round solder pad.

Installation of LED module

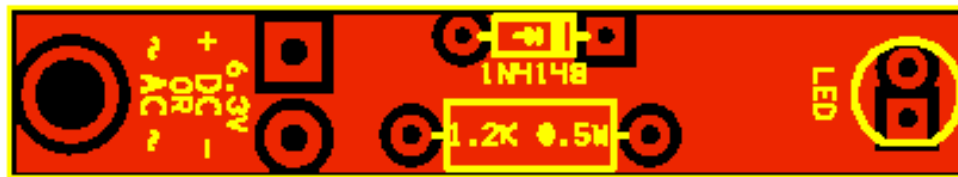
First, remove the old pilot lamp assembly. If you are building a PAS-NG, this step does not apply.
Now install the screw into the small chassis hole and fasten with one 4/40 nut, then add another 4/40 nut, as the two nuts will also double as a spacer, see photos.



Now is a good time, before installing the LED pcb, to solder the two 12VAC wires to it. Since it is AC, it does not matter which wire goes to which pad on the LED PCB.
If however, you happen to use 12VDC, you need to take note of the polarity, make sure you solder the +12VDC wire into the square pcb pad and the -12VDC wire into the round pcb pad!

Now, install the LED pcb and fasten with the 4/40 keep nut, see photo.
Even though the LED will poke through the pilot light hole quite a way, once the front panel is installed, it will push the LED back a little, this will not harm the pcb assembly. As an alternative, you can enlarge the pilot light hole in the front panel to 7/32", which will then allow the LED to poke through the front panel.

NOTE: the dropping resistor is now a 7.5K 1/2W resistor and no longer the 1.2K used previously. The LED pcb still shows the 1.2K 1/2W though!



NOTE: the dropping resistor is now a 7.5K 1/2W resistor and no longer the 1.2K used previously. The LED pcb still shows the 1.2K 1/2W though!